



# GAT MONTHLY MEMBERSHIP PROGRESS REPORT

Results as of: 2/28/2022

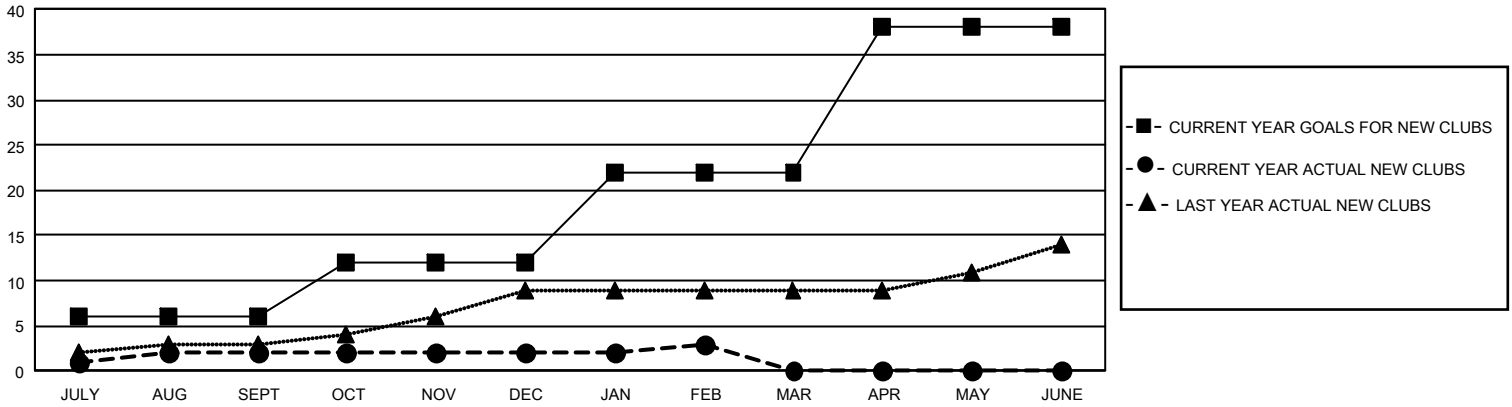
## GMT Constitutional Area 1, Group D

REPORT DOES NOT INCLUDE CLUBS IN UNDISTRICTED AREAS.

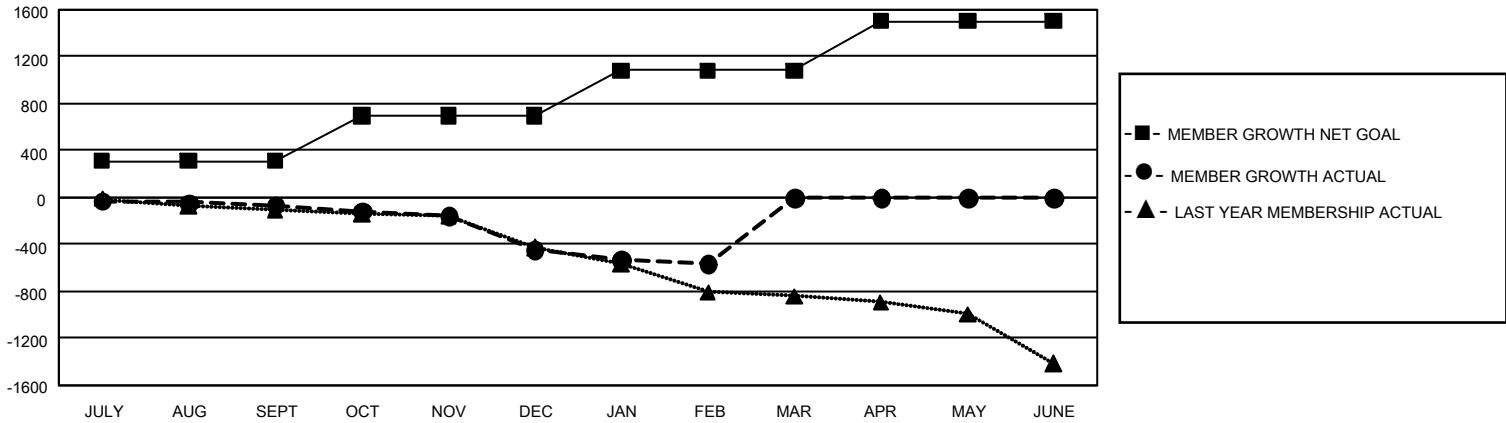
Clubs			
RESULTS FOR 2021-2022			
QUARTER	NEW CLUB GOAL	NEW CLUBS	DROPPED CLUBS
JULY/AUG/SEPT	18	2	15
OCT/NOV/DEC	18	0	5
JAN/FEB/MAR	30	1	9
APR/MAY/JUNE	48	0	0

Members			
RESULTS FOR 2021-2022			
QUARTER	MEMBER GROWTH NET GOAL	MEMBER GROWTH ACTUAL	DROPPED MEMBERS ACTUAL (including transfers)
JULY/AUG/SEPT	309	705	641
OCT/NOV/DEC	389	520	866
JAN/FEB/MAR	384	393	466
APR/MAY/JUNE	424	0	0

GOALS AND ACTUAL NEW CLUBS CUMULATIVE



GOALS AND ACTUAL MEMBERS CUMULATIVE



<b>DROPPED CLUBS: 29</b>	<b>483 CLUBS OF 1,071 ADDED 1 OR MORE NEW MEMBERS</b>	<b><u>GENDER DISTRIBUTION</u></b>	
		MALE 17,581 (67.52%)	FEMALE 8,456 (32.47%)
<b><u>DROPPED MEMBERS</u></b>		NON BINARY 0 (0.00%)	PREFER NOT TO ANSWER 2 (0.01%)
DECEASED 431	<a href="#">CLICK HERE FOR CUMULATIVE MEMBERSHIP DATA</a>	TOTAL FAMILY UNIT MEMBERS 5,243	
CLUB CANCELLED 167		FAMILY MEMBERS PAYING HALF DUES 2,696	
OTHER 1,374			
<b>TOTAL 1,972</b>			